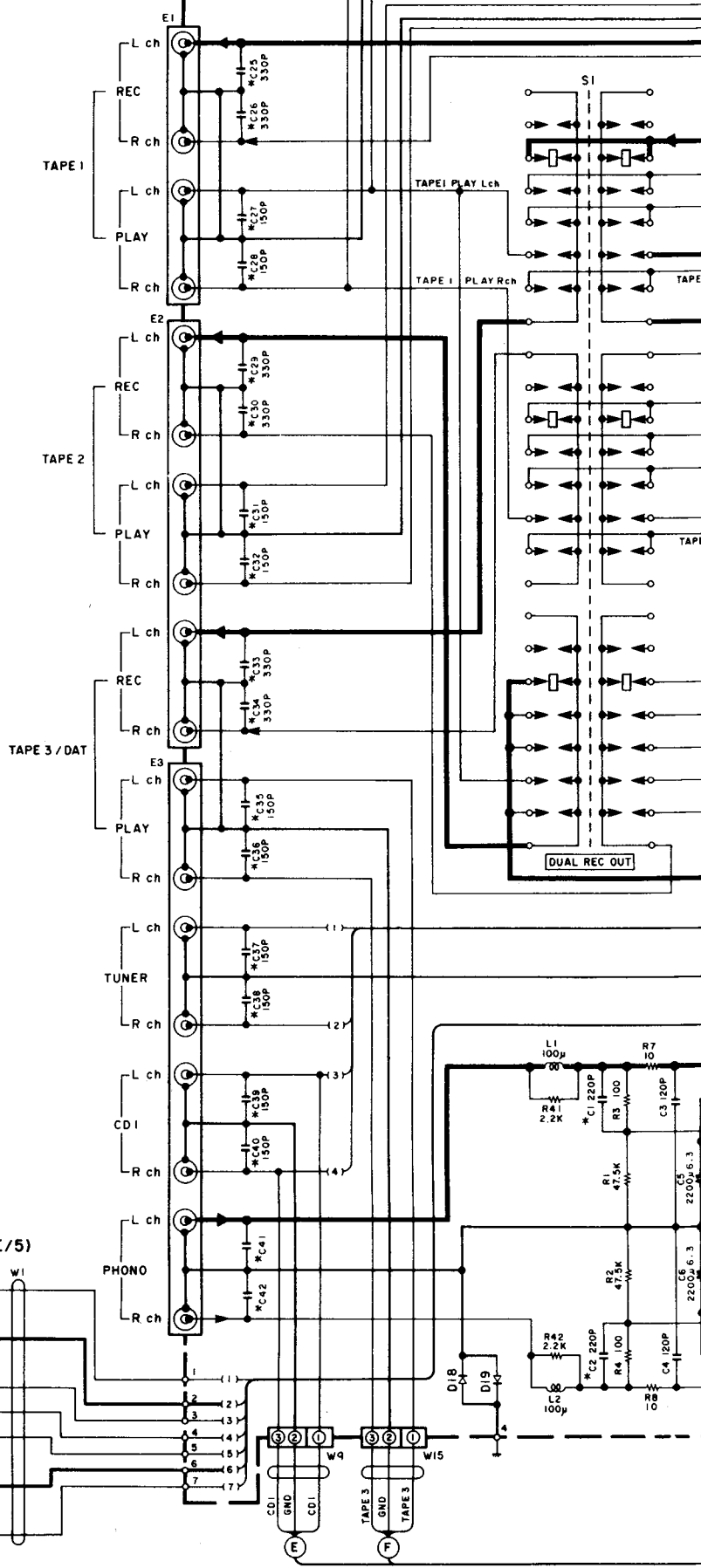
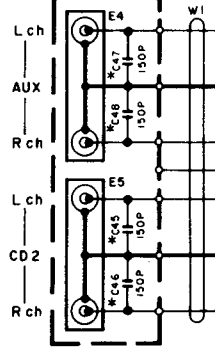


(X08-223X-XX) (A/5)

1
2
3
4
5
6
7



(X08-223X-XX) (E/5)

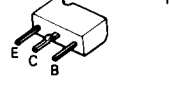
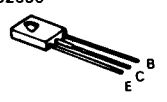
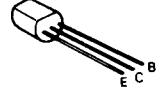
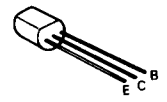


2SC2320

2SC945(A)

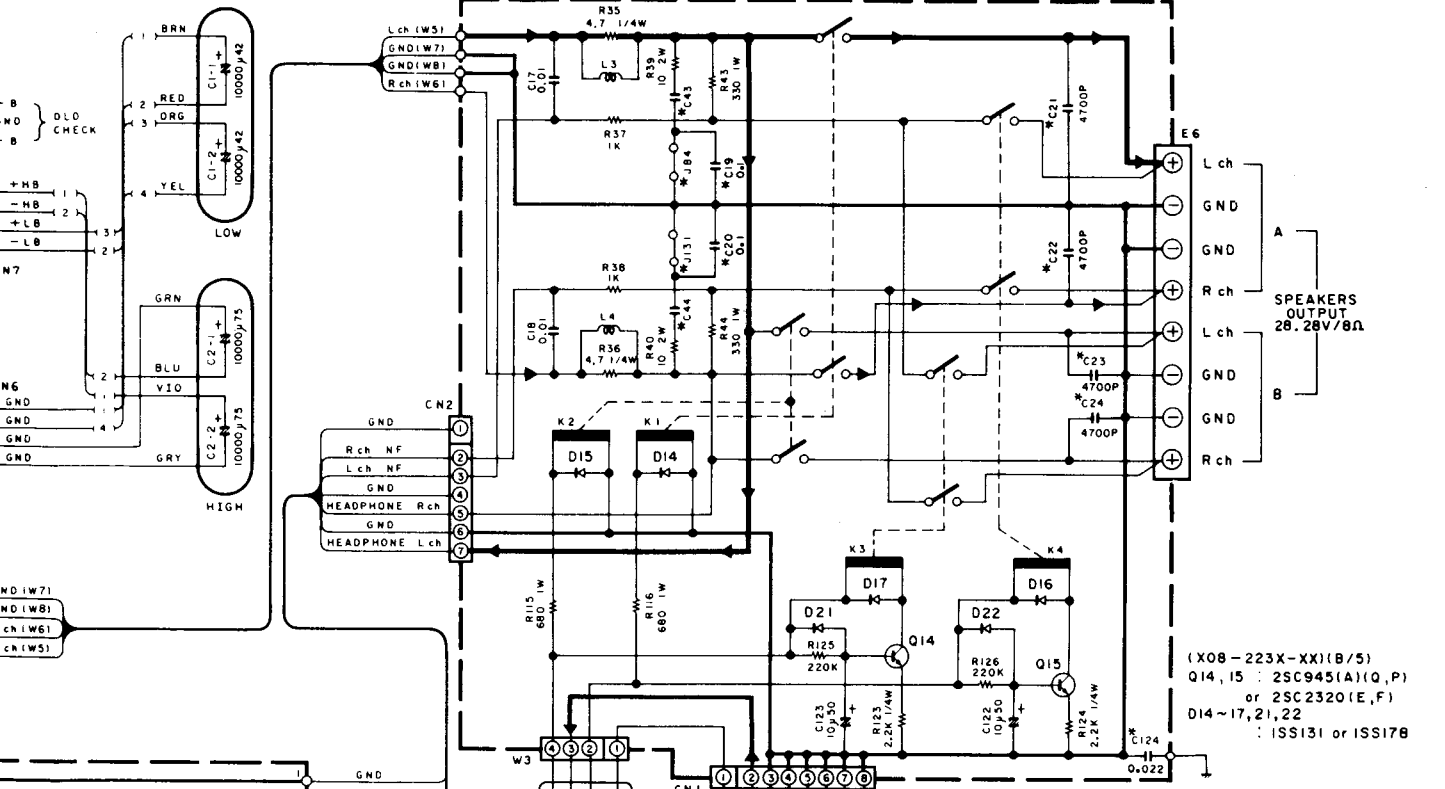
2SA1110
2SC2590

2SC2021F



NJM
NJM

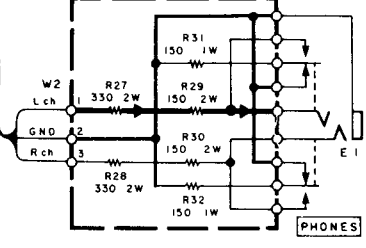
(X08-223X-XX)(B/5)



(X08-223X-XX)(B/5)
 Q14, I5 : 2SC945(A)(Q,P)
 or 2SC2320(E,F)
 D14~17,21,22
 : ISS131 or ISS178

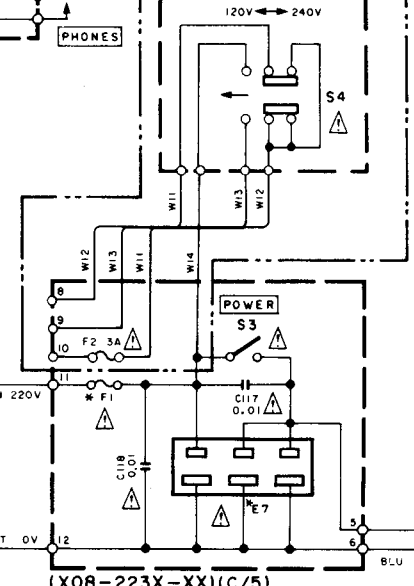
CAUTION: For continued safety, replace safety critical components only with manufacturer's recommended parts (refer to parts list). **⚠** Indicates safety critical components. To reduce the risk of electric shock, leakage-current or resistance measurements shall be carried out (exposed parts are acceptably insulated from the supply circuit) before the appliance is returned to the customer.

(X09-256X-XX)(C/3)



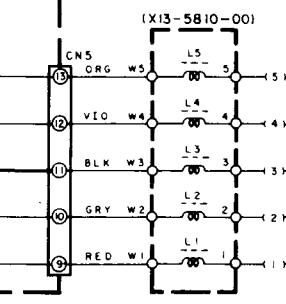
(M)TYPE ONLY

(X08-2230-21)(D/5)



(X08-223X-XX)(C/5)

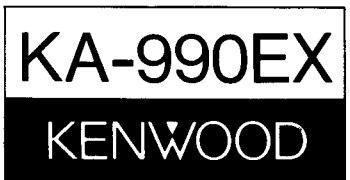
(E1) AC 220V
 50Hz
 (T) AC 240V
 50Hz
 (M) AC 220-240V
 50/60Hz

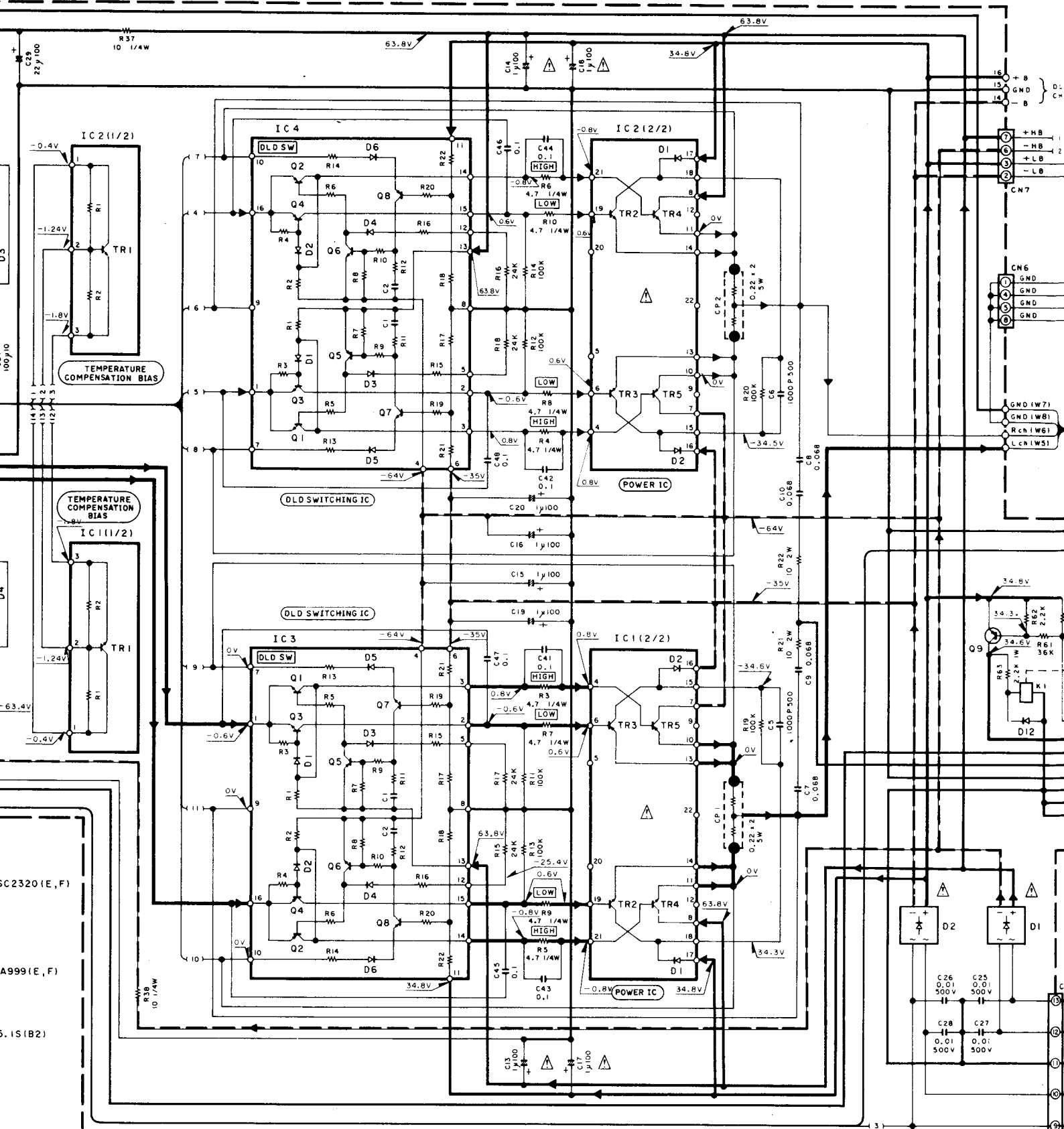


C124	J84,31	E7	F1
YES	NO	NO	T2.5A
NO	YES	YES	3A

- SIGNAL LINE
- GND LINE
- +B LINE
- - - -B LINE

KA-990EX(E)(2/2)





- (X09-256X-XX)
 IC1,2 : KAB01
 IC3,4 : TA2030
 Q1,2 : 2SC2003(L, K)
 Q3 : 2SC1845(F, E)
 Q4,5 : 2SA954(L, K)
 Q6 : 2SA992(F, E)

- Q7 : 2SA1124(Q, R, S)
 Q8 : 2SC2632(Q, R, S)
 Q9 : 2SA999(E, F)

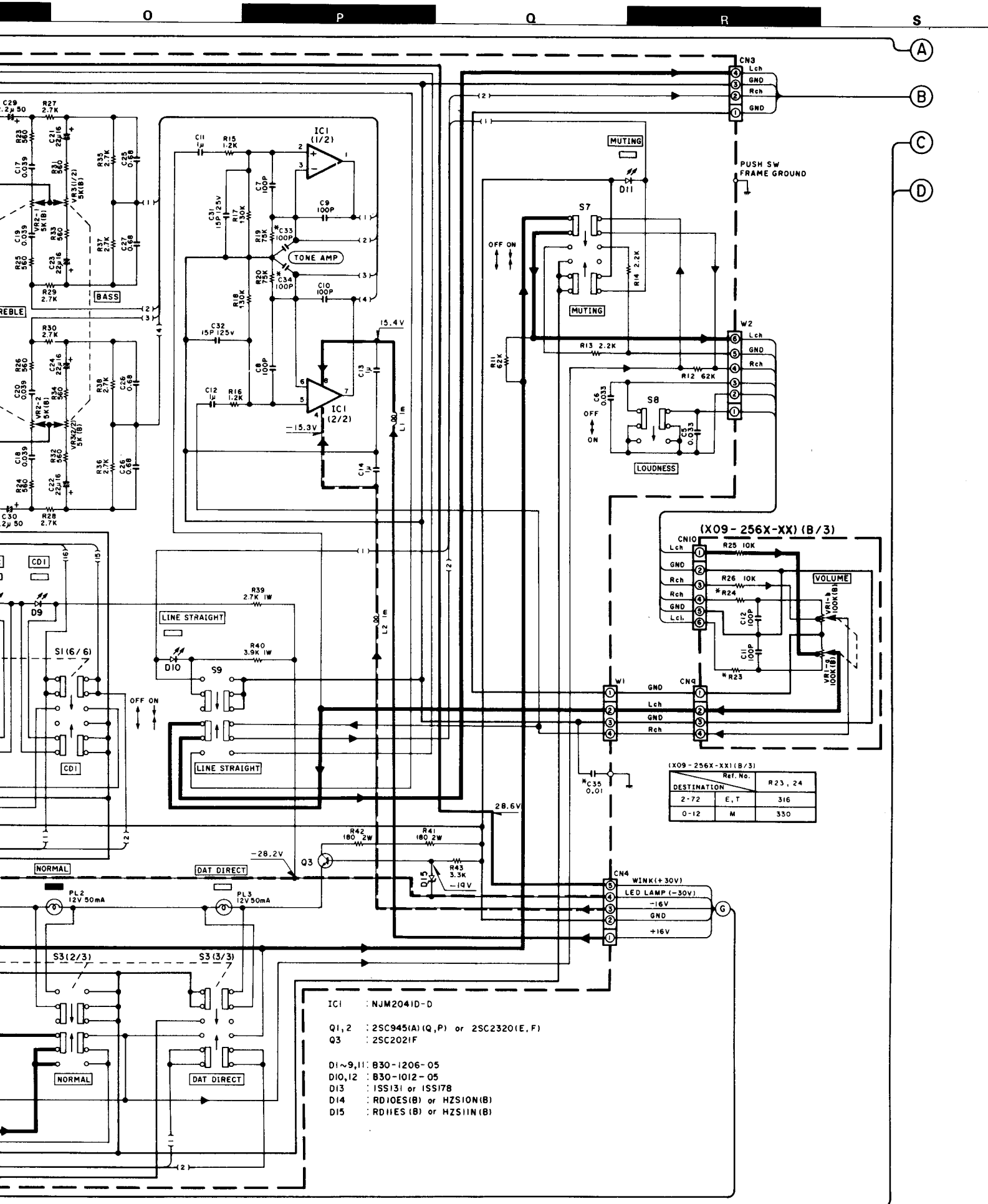
- D1,2 : D5FB20 *1
 D3,4,7 : E-102
 D5,6,8 : RDB.2JS(B2) or HZS8.2S(B2)
 D9,10 : RD20JS(B2) or HZS20S(B2)
 D11,12 : ISS131 or ISS178

(X08-223X-XX1(B/S)(C/S))

Ref. No.	C19,20	C21,24	C43,44	C124
DESTINATION				
2-71	YES	YES	0.1	YES
C-21	NO	NO	0.047	NO

Les tensions c.c. doivent être mesurées avec un voltmètre à haute impédance sans signal d'entrée. Les valeurs peuvent différer légèrement du fait des variations inhérentes aux appareils et aux instruments de mesure individuels.

Die angegebenen Gleichspannungswerte wurden mit einem hochohmigen Spannungsmesser ohne Eingangssignal gemessen. Dabei schwanden die Meßwerte aufgrund von Unterschieden zwischen einzelnen Instrumenten oder Geräten u.U. geringfügig.

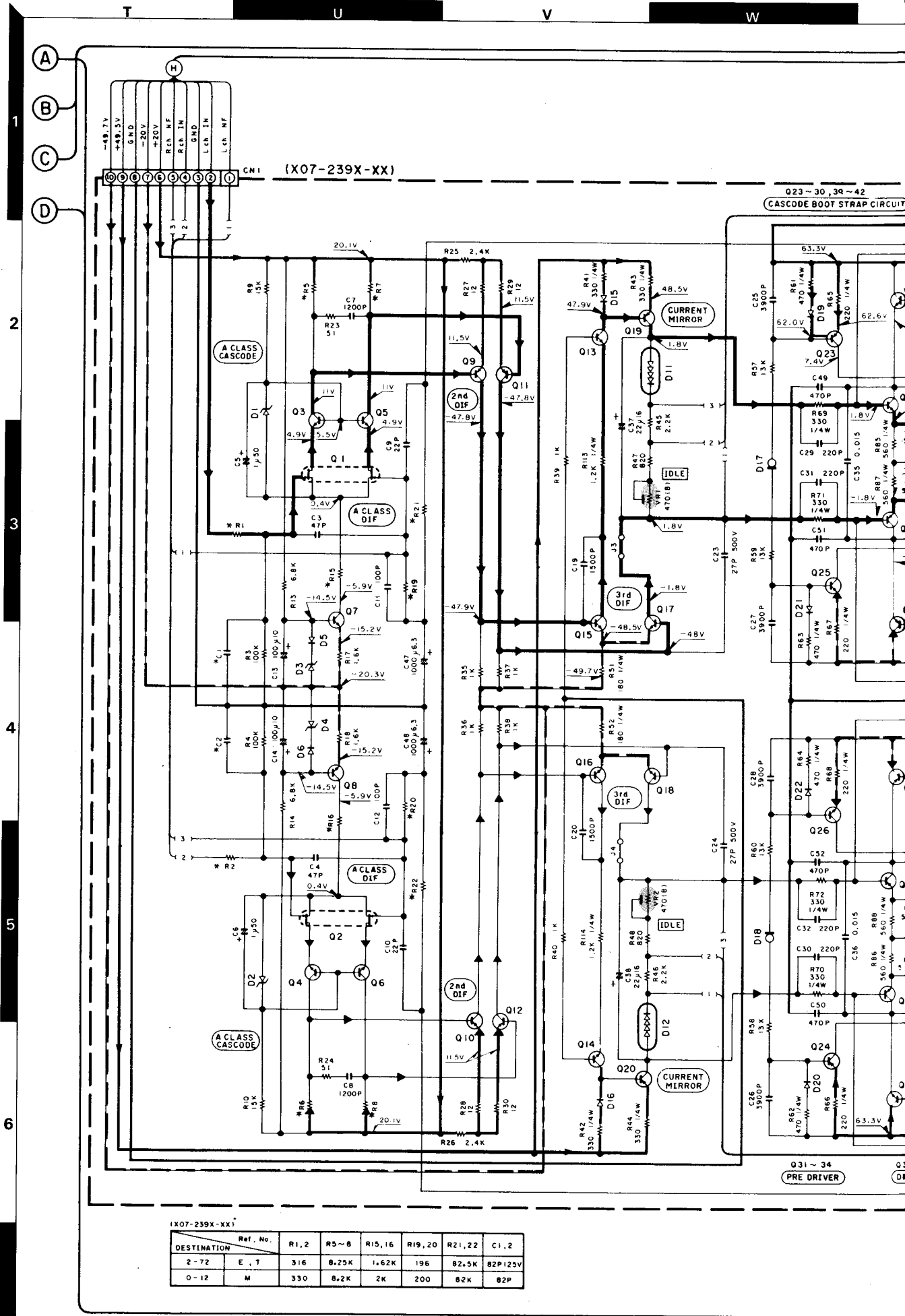


KA-990EX (E) (1/2)

Die angegebenen Gleichspannungswerte wurden mit einem hochohmigen Spannungsmesser ohne Eingangssignal gemessen. Dabei schwanden die Meßwerte aufgrund von Unterschieden zwischen einzelnen Instrumenten oder Geräten u.U. geringfügig.

KA-990EX

KENWOOD



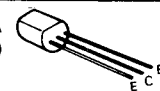
2SA1123
2SA1124
2SA1534A

2SA733(A)
2SA954
2SA992

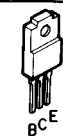
2SA999
2SC1845
2SC2003

2SC2320
2SC2631
2SC2632

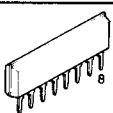
2SC3940A
2SC945(A)



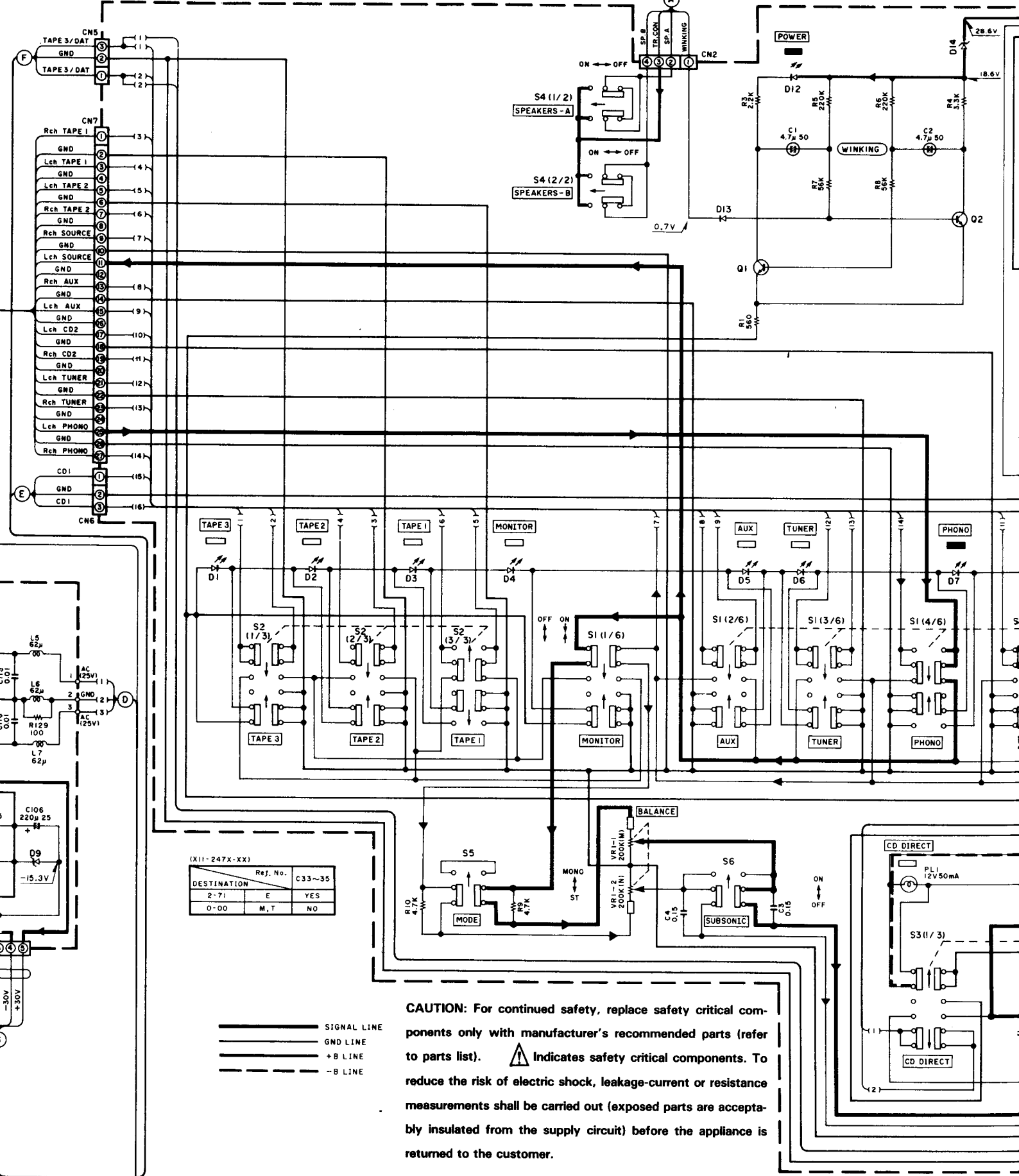
2SA1535
2SC3944



μPC1237HA



(X11-247X-XX)



(X11-247X-XX)

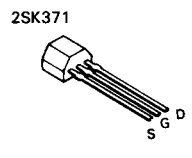
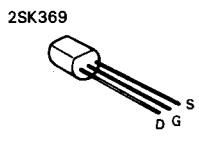
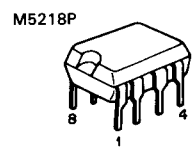
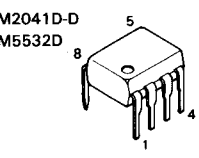
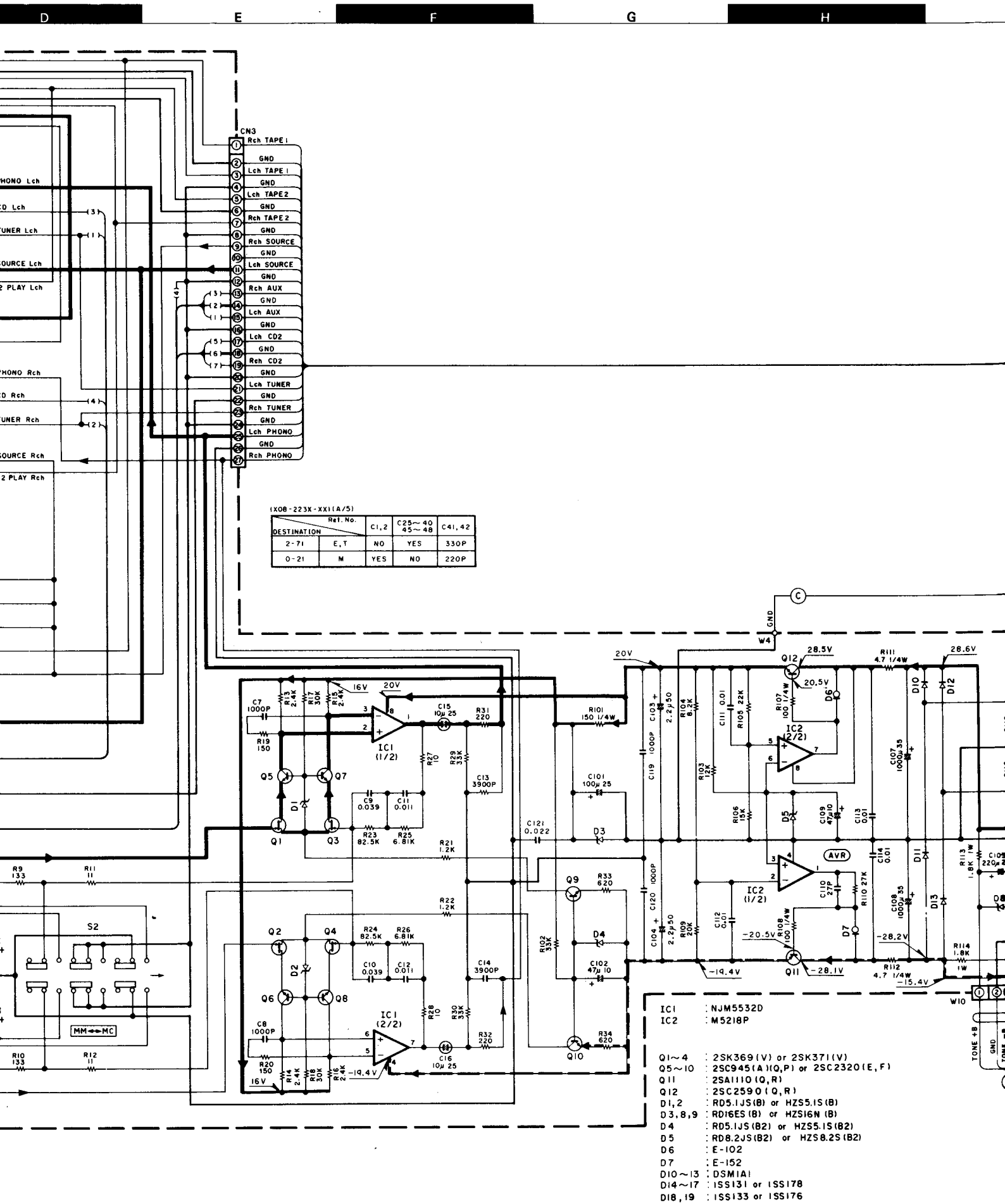
DESTINATION	Ref. No.	C33-35
2-71	E	YES
0-00	M, T	NO

CAUTION: For continued safety, replace safety critical components only with manufacturer's recommended parts (refer to parts list). **⚠** Indicates safety critical components. To reduce the risk of electric shock, leakage-current or resistance measurements shall be carried out (exposed parts are acceptably insulated from the supply circuit) before the appliance is returned to the customer.

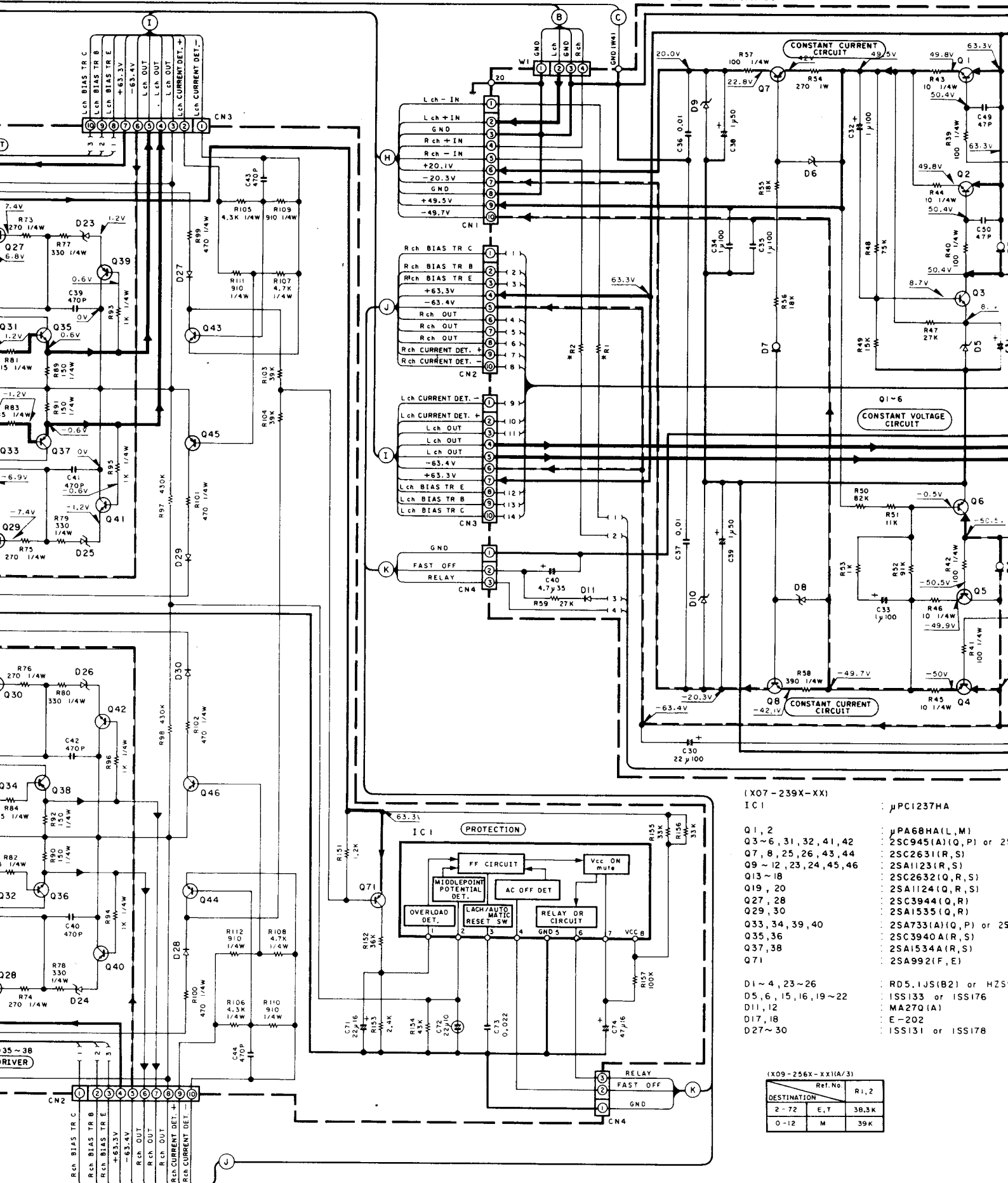
——— SIGNAL LINE
 - - - - - GND LINE
 ······ +B LINE
 ······ -B LINE

DC voltages are as measured with a high impedance voltmeter with no signal input. Values may vary slightly due to variations between individual instruments or/and units.

Les tensions c.c. doivent être mesurées avec un voltmètre à haute impédance sans signal d'entrée. Les valeurs peuvent différer légèrement du fait des variations inhérentes aux appareils et aux instruments de mesure individuels.



(X09-256X-XX) (A/3)

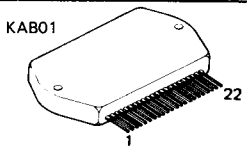
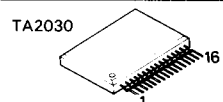


(X07-239X-XX)

- IC1 : µPC1237HA
- Q1, 2 : µPA68HA(L,M)
 - Q3~6, 31, 32, 41, 42 : 2SC945(A)(I, P) or 2S
 - Q7, 8, 25, 26, 43, 44 : 2SC2631(R, S)
 - Q9~12, 23, 24, 45, 46 : 2SA1123(R, S)
 - Q13~18 : 2SC2632(Q, R, S)
 - Q19, 20 : 2SA1124(Q, R, S)
 - Q27, 28 : 2SC3944(Q, R)
 - Q29, 30 : 2SA1535(Q, R)
 - Q33, 34, 39, 40 : 2SA733(A)(I, Q, P) or 2S
 - Q35, 36 : 2SC3940A(R, S)
 - Q37, 38 : 2SA1534A(R, S)
 - Q71 : 2SA992(F, E)
- D1~4, 23~26 : RD5, 1JS(B2) or HZ5
- D5, 6, 15, 16, 19~22 : 1SS133 or 1SS176
- D11, 12 : MA27Q(A)
- D17, 18 : E-202
- D27~30 : 1SS131 or 1SS178

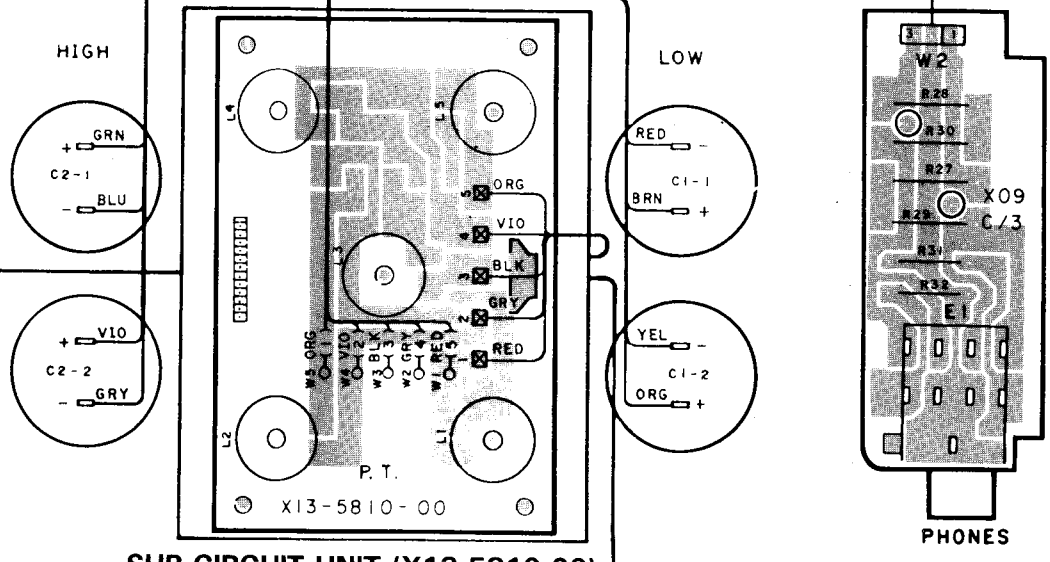
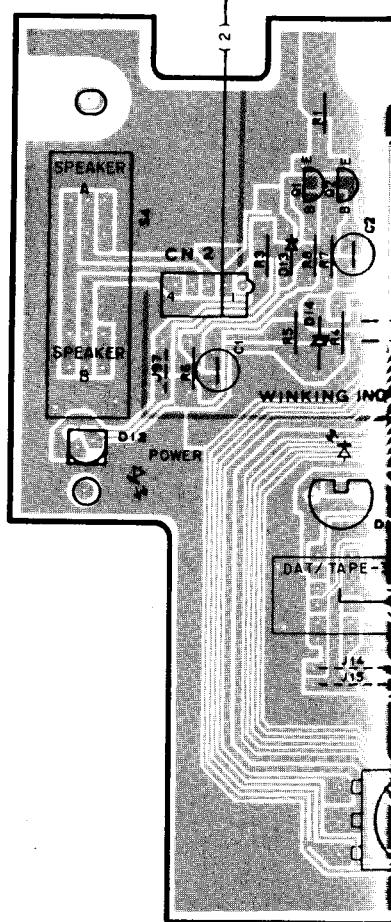
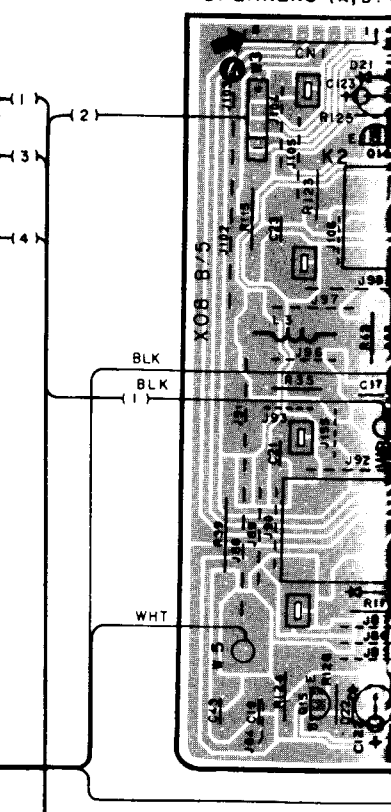
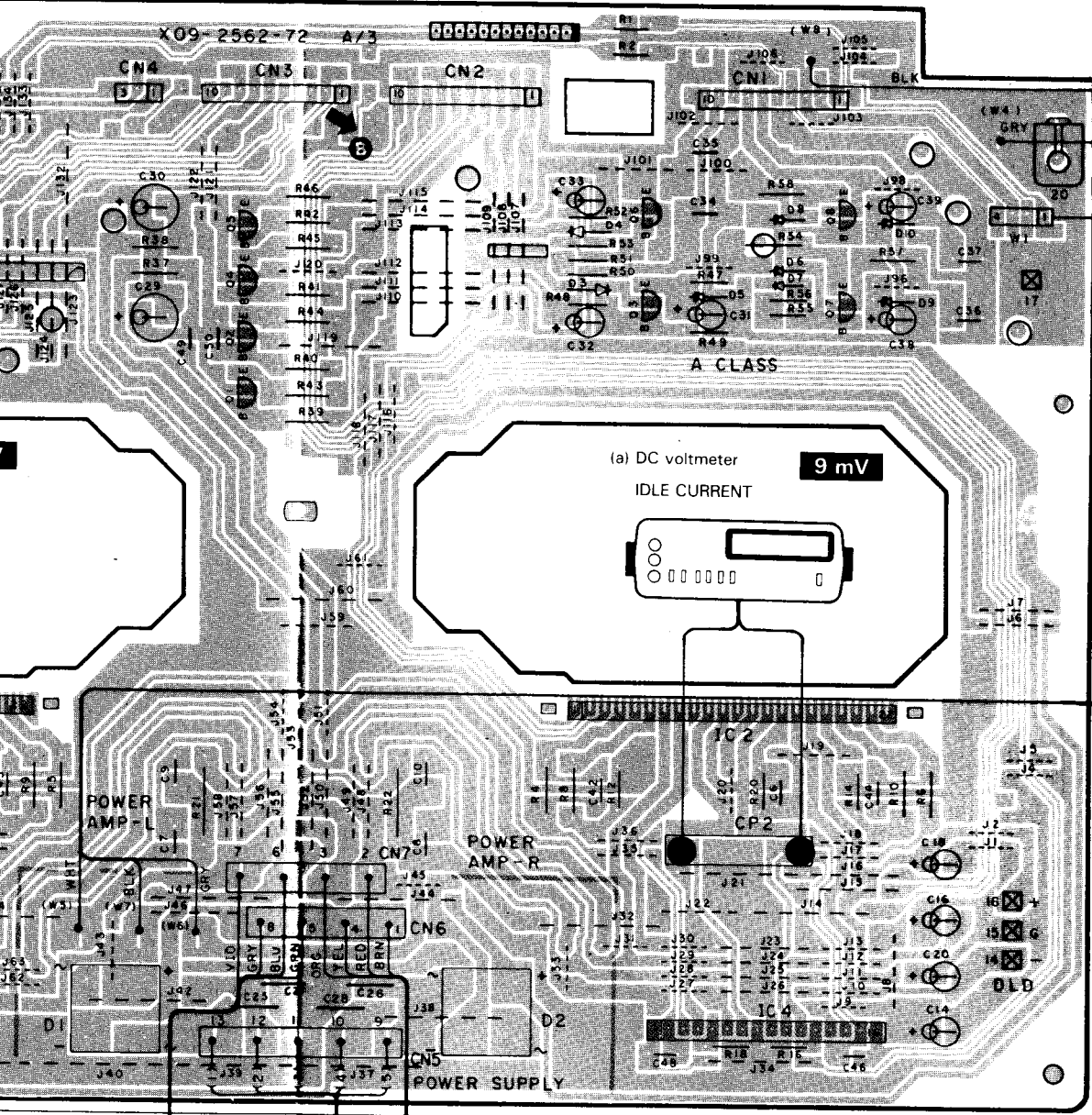
(X09-256X-XX)(A/3)

DESTINATION	Ref.No	R1, 2
2-72	E, T	38.3K
0-12	M	39K



DC voltages are as measured with a high impedance voltmeter with no signal input. Values may vary slightly due to variations between individual instruments or/and units.

PREAMPLIFIER
SPEAKERS (A, B)

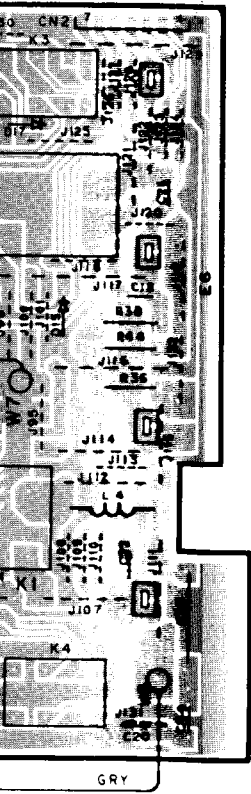


SUB-CIRCUIT UNIT (X13-5810-00)

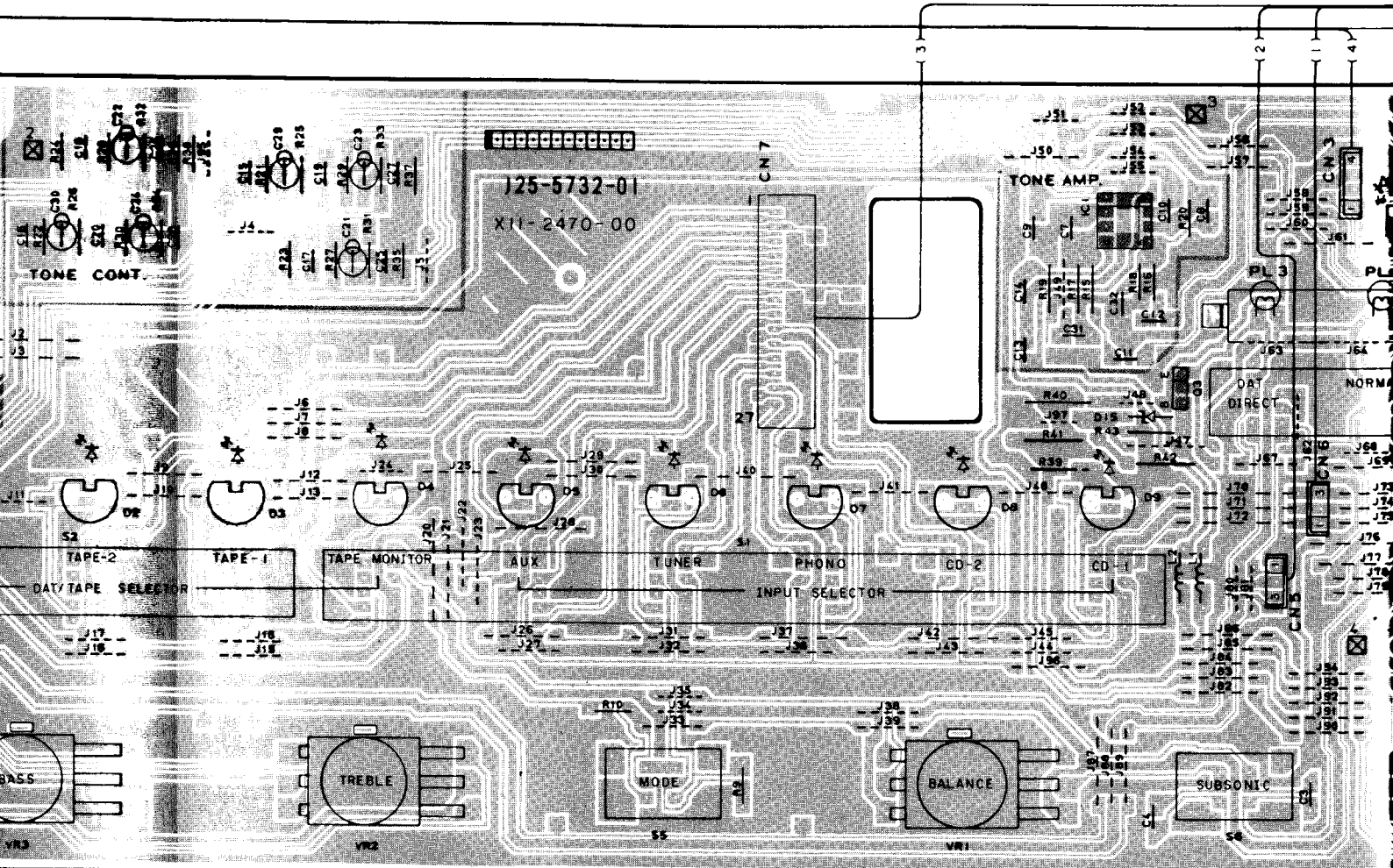
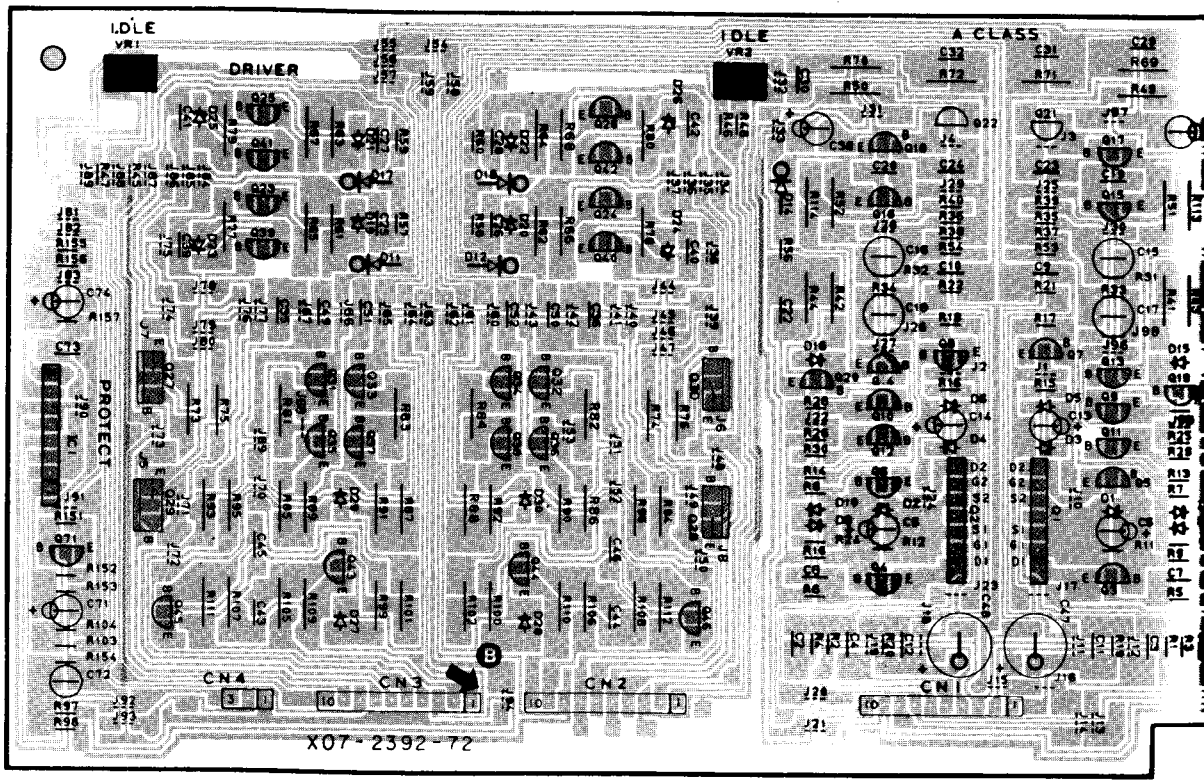
TONE UNIT (X11-2470)

UNIT (X08-2232-71)

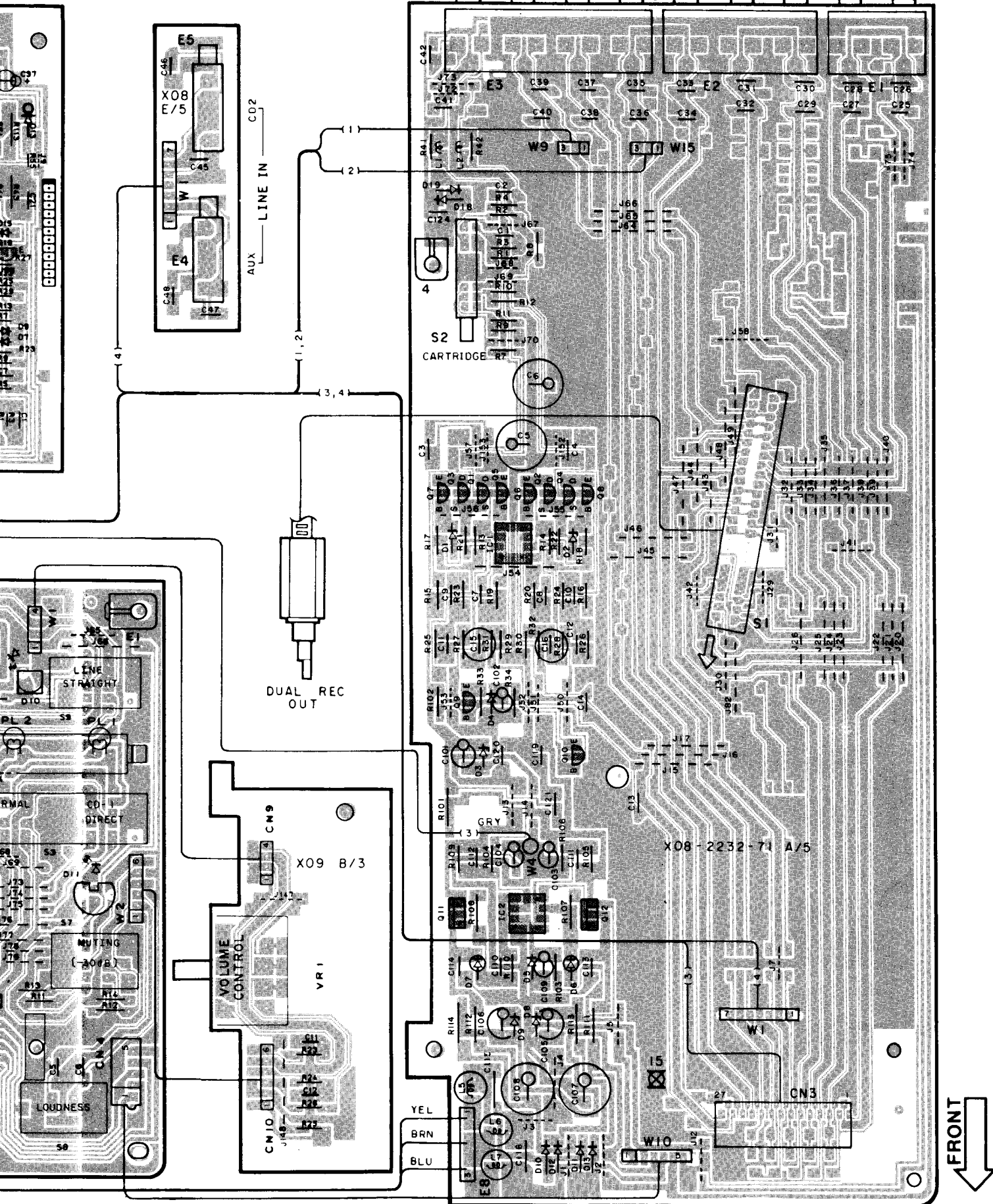
16Ω, A+B: 8~16Ω



POWER AMPLIFIER UNIT (X07-2392-72)



(-00)



PREAMPLIFIER UNIT (X08-2232-71)

Refer to the schematic diagram for the values of resistors and capacitors.

PC BOARD VIEW (Component side view)

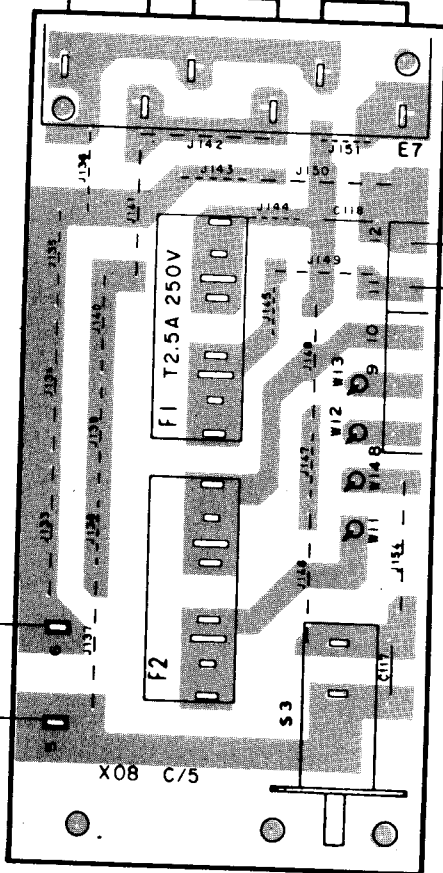
AUDIO UNIT
(X09-2562-72)

AC 220V / 50Hz

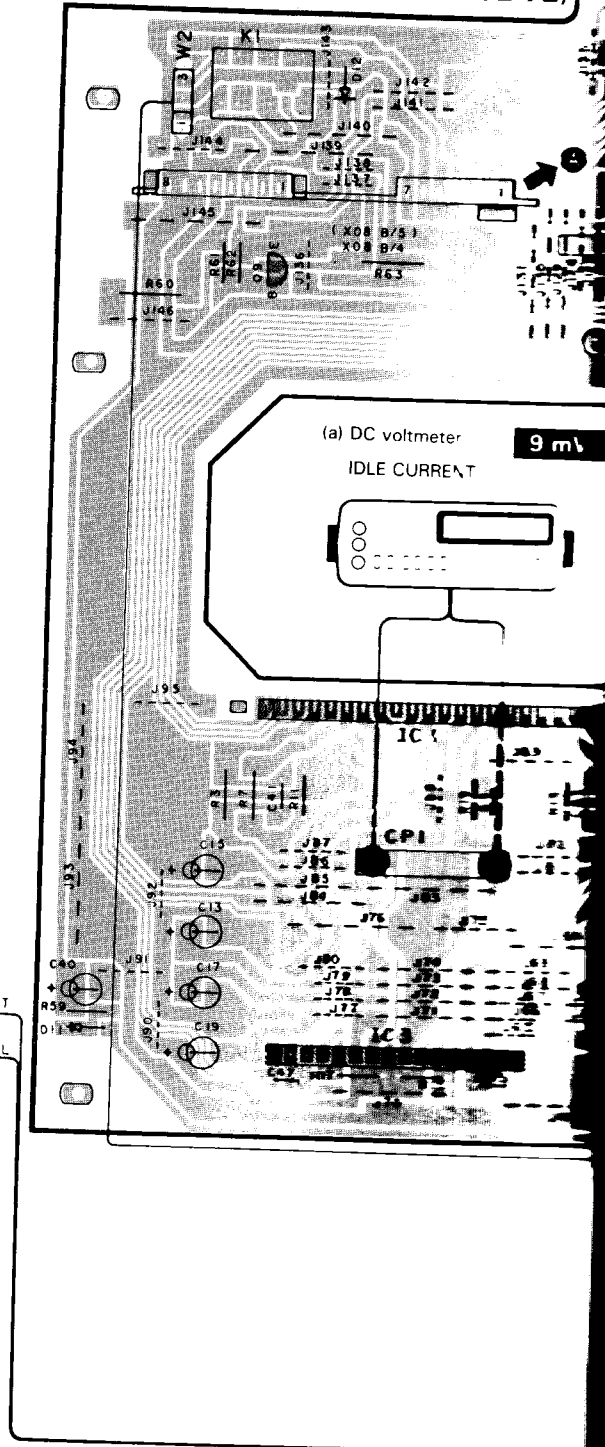


1
2
3
4
5
6
7

UNSWITCHED TOTAL 400W MAX. SWITCHED 100W MAX.

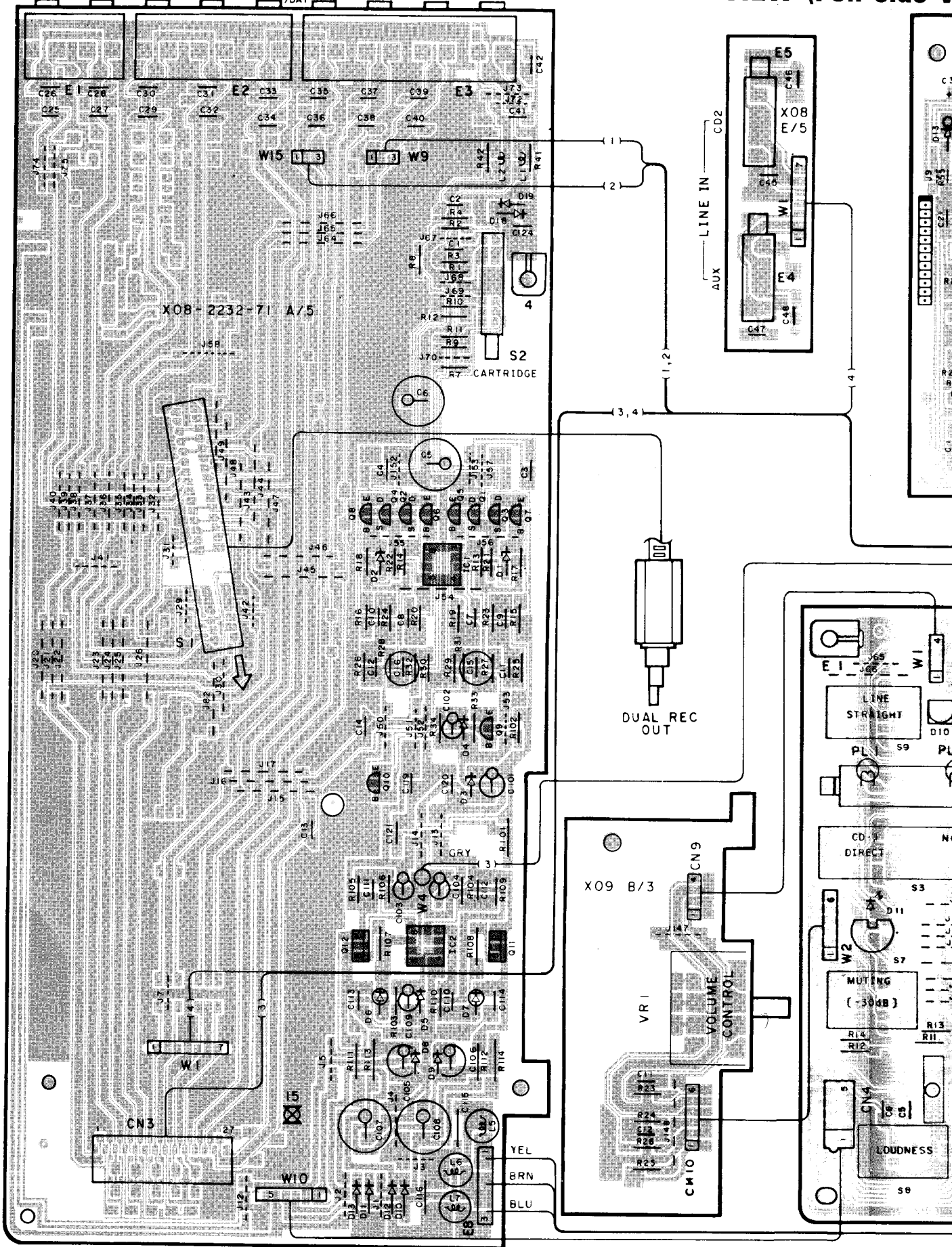


PREAMPLIFIER UNIT POWER
(X08-2232-71)



REC - 1 - PLAY TAPE REC - 2 - PLAY REC - 3 - PLAY /DAT LINE TUNER CDI PHONO

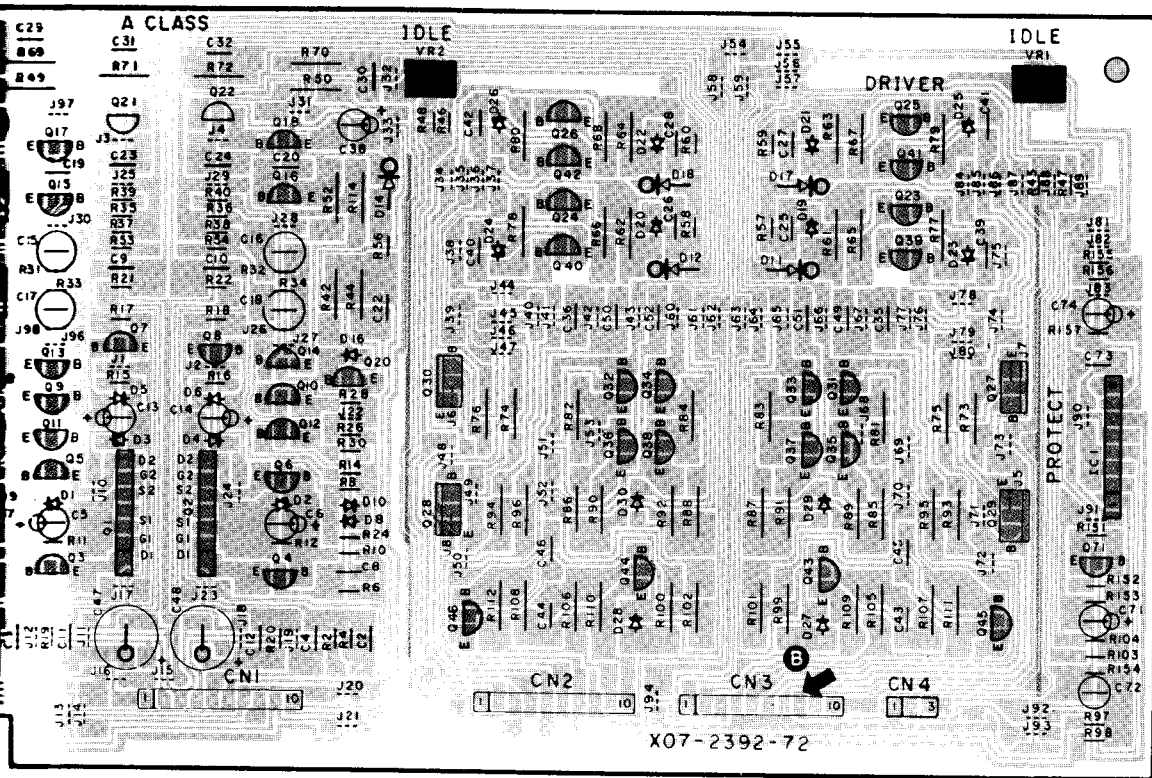
PC BOARD VIEW (Foil side view)



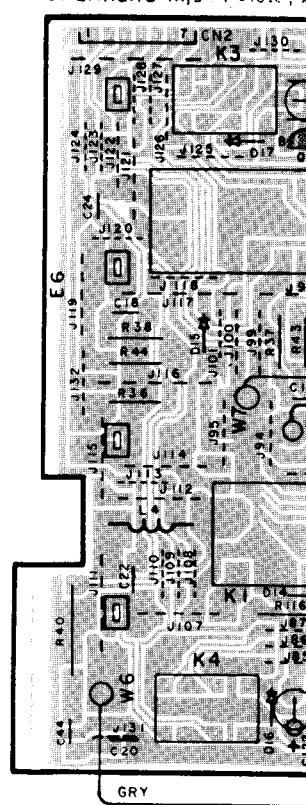
PREAMPLIFIER UNIT (X08-2232-71)

FRONT
↓

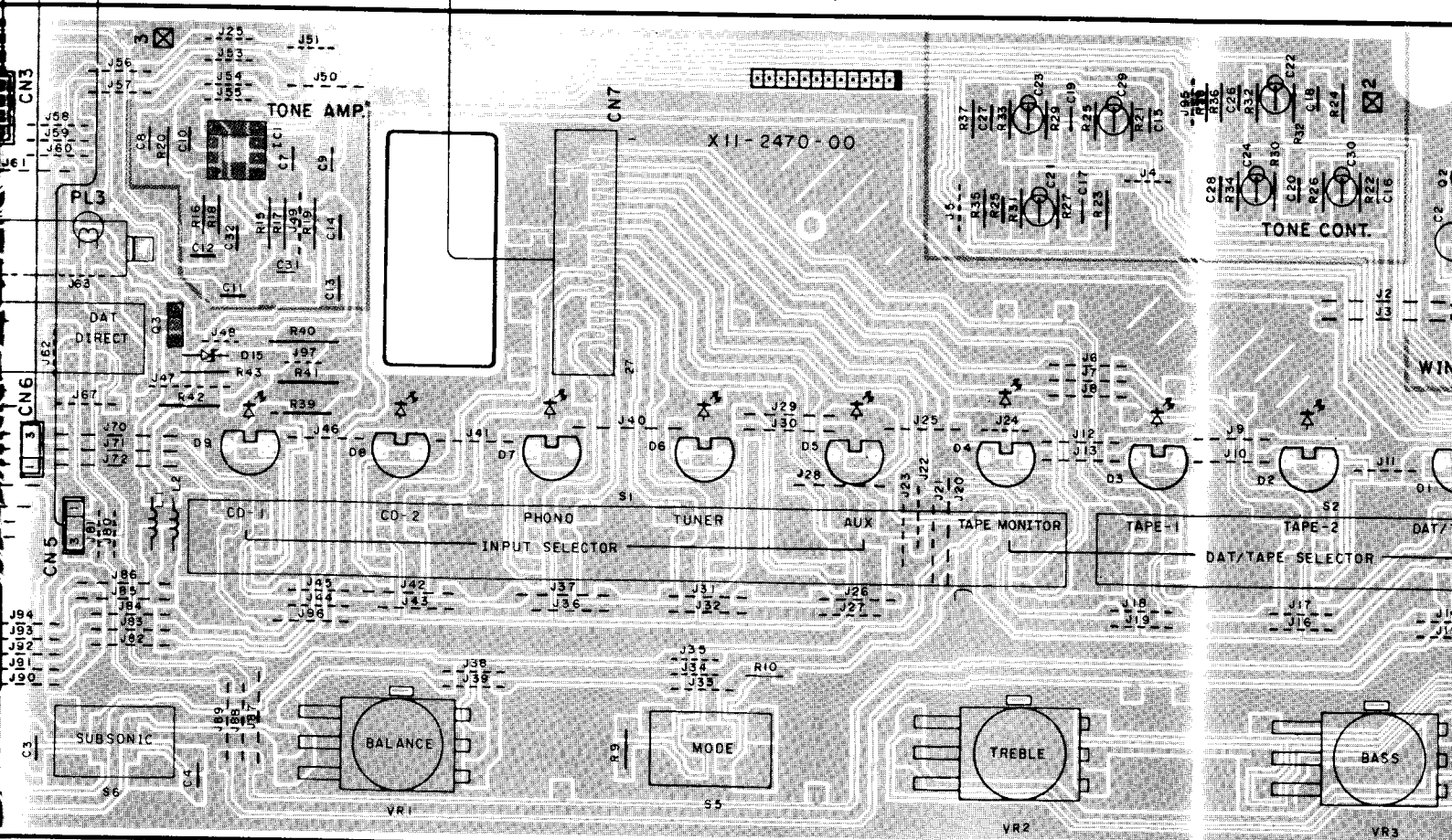
POWER AMPLIFIER UNIT (X07-2392-72)



PREAMPLIFIER UNIT SPEAKERS (A,B 4~16Ω)

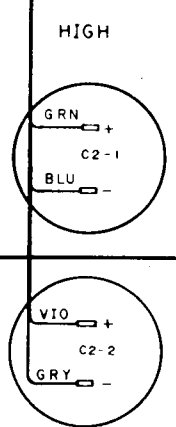
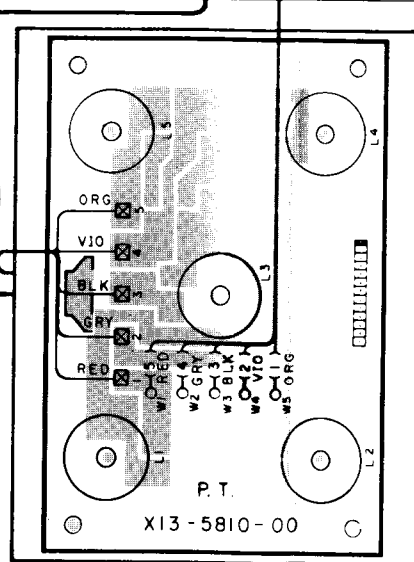
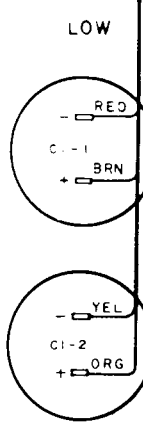
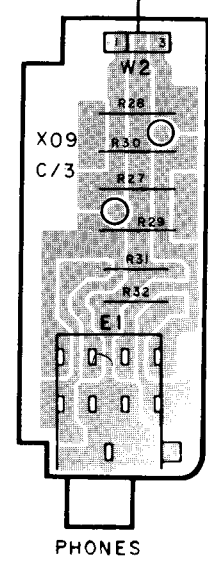
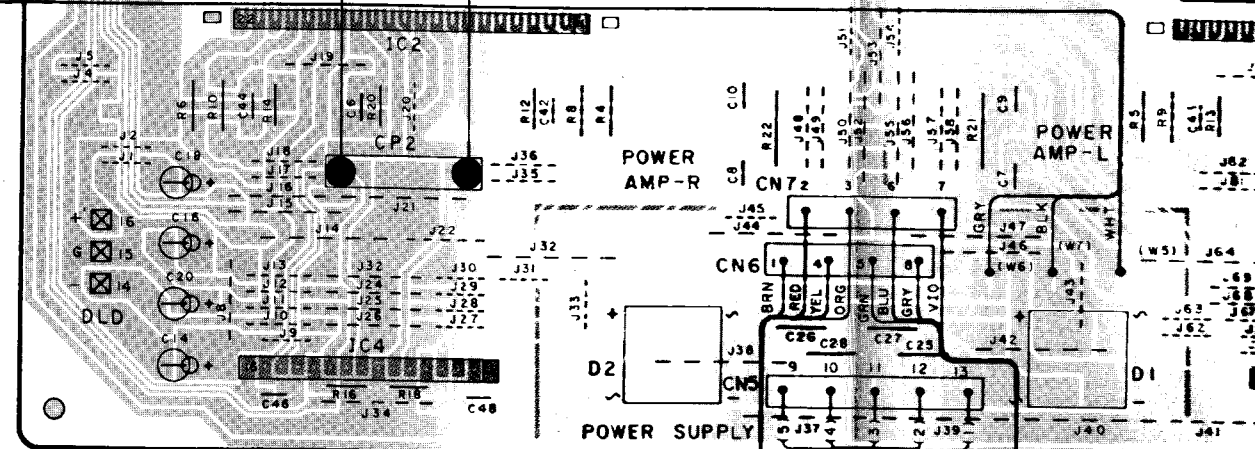
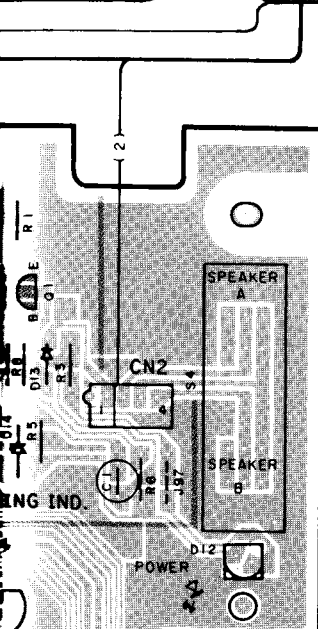
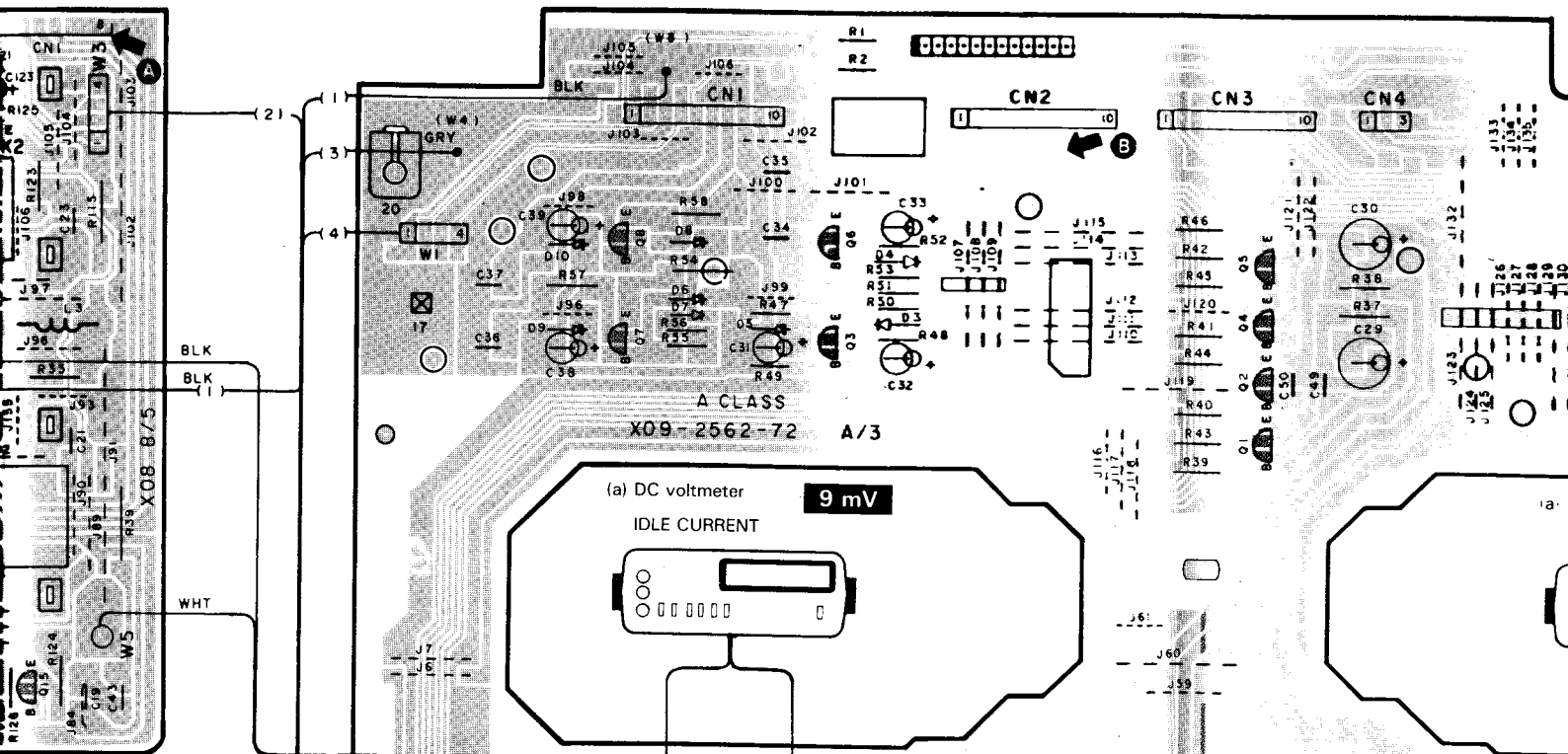


TONE UNIT (X11-2470-00)

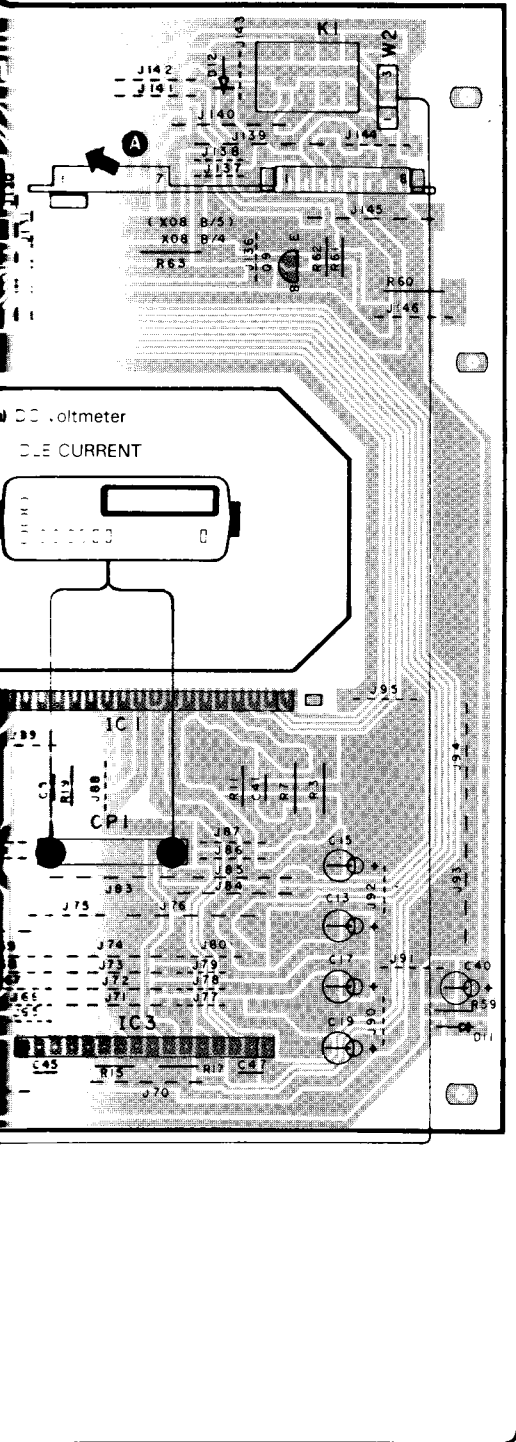


(X08-2232-71)
B 8 ~ 16Ω

AUDIO UNIT (X09-2562-72)



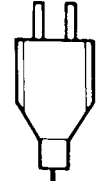
SUB-CIRCUIT UNIT (X13-5810-00)



DC voltmeter
D.C. CURRENT

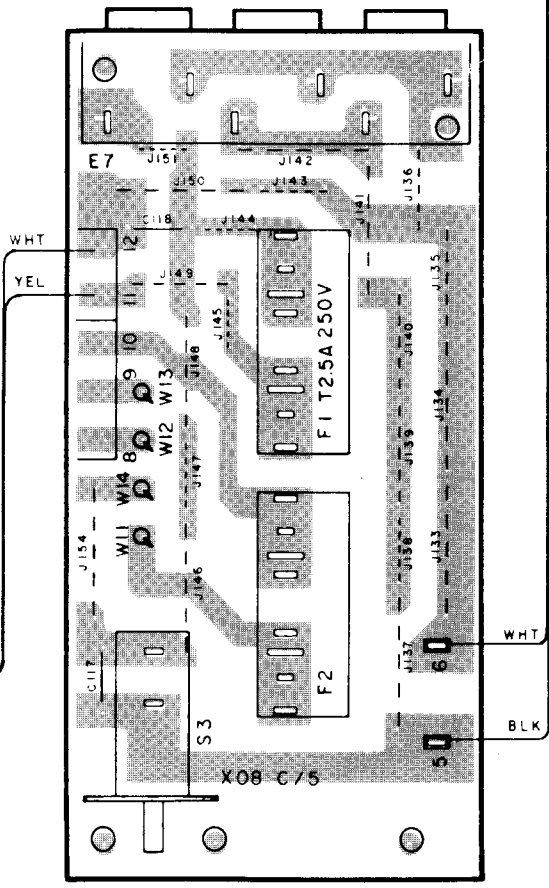


AC 220V/ 50Hz



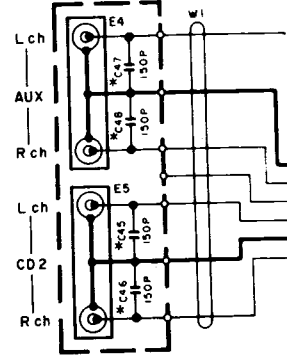
**PREAMPLIFIER UNIT
(X08-2232-71)**

SWITCHED UNSWITCHED
100W MAX. TOTAL 400W MAX.

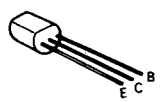


POWER

(X08-223X-XX)(E/5)



2SC2320



Refer to the schematic diagram for the values of resistors and capacitors.

1
2
3
4
5
6
7

TAPE 1
TAPE 2
TAPE 3 / DAY